

UCB DATA SHEET



Continuously Cast Spheroidal Graphite Iron: UCB Grade Unibar 600-3 (Guidance only)

Characteristics:

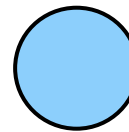
Offers reasonable machinability and excellent surface finish combined with higher wear resistance, strength & heat treatment response compared to Unibar 500-7. Noise and vibration damping are good in this grade. Compares with standard **EN-1563-GJS-600-3 GGG60** and **Meehanite SP600**

Unibar Profile and Size Range	
Round	25mm - 645mm + diameter
Square	Up to 520 mm x 520mm
Rectangle	Unibar is produced in a wide range of combinations, in height and width, up to 650mm x 510mm and 620mm x 370mm for example, other sizes to customer requirements can also be considered after consultation.
Ingots	Up to 1200mm diameter x 2100mm metre long (proof machined).
Ingot Blocks	Up to 800mm x 750mm x 2100mm long (proof machined).
Standard Length	Continuously Cast Bar 3 metres (other lengths available upon request)
Supply condition	As-cast, turned and peeled (Rounds). As-cast, milled (proof machined) and saw cut (rectangles and squares)
Non Standard	Sizes/profiles to customer design available on special order, subject to discussion. Unibar 600-3 produced to customer order, with limited stocks available.

Chemistry (Typical Ranges): (Subordinate to Mechanical Properties)

Element	Typical %
Carbon	3.25 - 3.70
Silicon	2.40 - 3.00
Manganese	0.10 - 0.30
Sulphur	0.005 - 0.020
Phosphorous	0.015 - 0.08
Magnesium	0.04 - 0.07
Others/Alloying	Residual
Iron	Balance

Grade colour code



Light Blue

Mechanical Properties: (As taken from mid-radius of cast bar, not separately cast test bar)

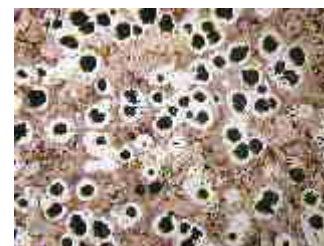
MATERIAL SPECIFICATION	MATERIAL SECTION	ANTICIPATED VALUES		
		Tensile strength UTS N/mm ²	0.2% Proof Stress N/mm ²	Elongation %
Unibar 600-3 EN-GJS-600-3:1997 (GGG60)	25mm - 50mm	600	370	3
	55mm - 100mm	600	360	2
	105mm - 200mm	550	340	1
	205mm - 600mm +	550	340	1

Brinell Hardness:

(Range) 200-270 (10mm dia Ball 3000Kg load) depending on section size. Hardness readings are taken across the entire section of the bar. Hardness values for rectangles depend on the ratio of height to width and can be supplied upon request.

Microstructure:

Contains Type I & II nodular (spheroidal) graphite in accordance with ASTM A247. The rim contains approximately 200/250 nodules/square mm, and is predominantly pearlitic with the core containing 90/150 nodules/sq. mm. The core matrix is greater than 50% pearlite with some ferrite. Chill carbides will be less than 5%, well dispersed. (At 100x magnification).



Heat Treat Response: Unibar 600-3 can be hardened by conventional methods, to Rc 50 on the bar surface, responds well to austempering (ADI).

Density: 7.3 g/cc

United Cast Bar Ltd

www.unitedcastbar.com

(UCB Issue 8 12-06-2013 UB600-3)