

Corona



B-Smart-Lock Corona

GB Operating manual

B-SMART-LOCK
CORONA

www.burg.de

B-Smart-Lock Corona



A LED ring

B Silicone ring (sideways around the knob)

Introduction

Dear customer,

Thank you for purchasing the B-Smart-Lock Corona electronic locker and furniture lock.

This lock is particularly robust and of high quality. It acts as an organisational closure of closets, cabinets, and drawers, and allows for easy management of a variety of users.

The B-Smart-Lock Corona is suited both for wooden as well as metal doors and flexibly covers different door thicknesses.

Important: Please observe all warnings and read the entire manual before you begin programming.

We hope you enjoy your new locking system.

Your BURG F.W. Lüling KG

In Original Condition

Programming	Multi User
Status Display	On
Signal tone	Off
Lock Mode	Latch Mode

General

You can always find the latest version of this manual on our website: www.burg.de

Important instructions

Lockdown Mode

After five successive unauthorized transponders are held in front of a lock, the lock will not accept any more transponders for three minutes. If during these three minutes, a transponder is held in front of the lock, the LED blinks red six times in quick succession. If the master card is held in front of the lock, then the lock mode is immediately terminated.

Secure transponder

In private mode, transponders that meet higher safety requirements may be used. These transponders are encrypted with an in-house Burg algorithm and are particularly difficult to copy. If such a transponder is paired to a lock, then it may no longer be used like the normal transponders for other locks. For this it must be unpaired.

Installation Mode

In the event that you have an installation card, please note that this only can be used until a transponder is paired to the Corona.

Master Card

The master card has several functions that are gathered here in a list. Precise instructions for use can be found farther down next to the corresponding bullets.

- Opens a lock. In battery-change mode it is the only way to open a lock. But in any other mode, the master card is authorised to open a lock.
- Authorises its user to pair and unpair transponders
- Authorises its user to activate and deactivate functions
- Authorises its user to release used transponders

- Saves the transponder No., which was last held in front of a lock. If the master card is then held again in front of another lock, the old saved one is overwritten.
- Ends lockdown mode.

Change battery mode

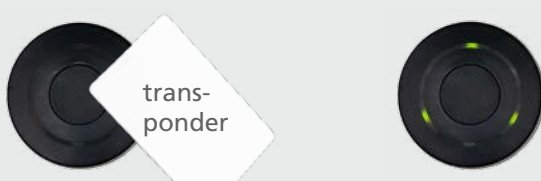
Should the two batteries in the lock fall below a certain voltage level, three consecutive descending tones will sound when a transponder is held in front of it to open or close it. This shows the user that there are still about 2–4 weeks (depending on the traffic levels of the lock) before the battery has to be replaced. If the voltage value is then particularly low the lock will no longer lock and will only open with the master card before the battery is then empty after which no action can be performed.


Technical specifications

Dimensions	98 x 66 mm body; Ø 39 mm x 19,74 mm door knob
Battery	lithium battery 3 V, CR123A Service life: approx. 30,000 locking cycles
Radio frequency	125 kHz
Material	Housing material: Zamak Knob: Plastic
Lock fastening	M19 nut, if necessary mounting plate (wood)

Operation


Locking


1.  Hold the transponder in front of the B-Smart-Lock Corona. The B-Smart-Lock Corona flashes green.

2.  The rotating knob can no longer rotate.

- 1.** Hold an authorised transponder in front of the rotating knob. The LED flashes green briefly and if the sound settings are set, you will hear two consecutive tones. If you have activated the status display, the red LED will start flashing after a short time.
- 2.** The rotating knob can no longer be turned. In the event that automatic locking is enabled for private mode, it will lock a few seconds after being opened, without having to hold up the transponder.

Opening

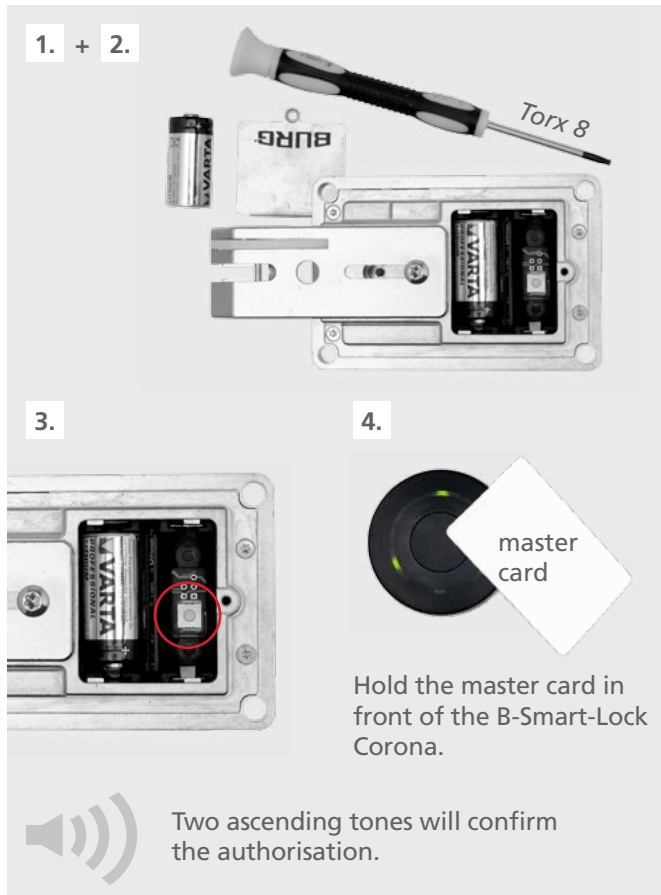
1.  Hold the transponder in front of the B-Smart-Lock Corona. The B-Smart-Lock Corona flashes green.

2.  Turn the rotating knob 90 ° to the right.

- 1.** Hold an authorised transponder in front of the rotating knob. The LED flashes green briefly and if the sound settings are set, you will hear two consecutive tones.
- 2.** Now you can turn the rotary knob to 90 ° degrees to the right and pull on the door.

Programming

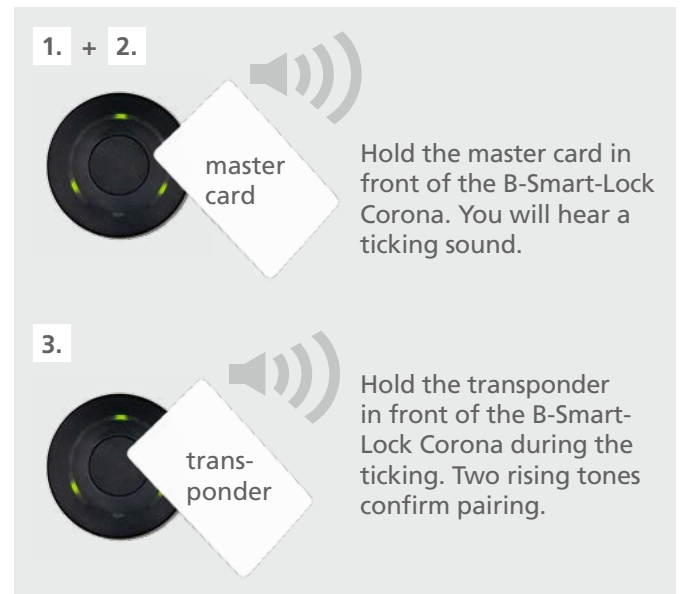
Pairing the master card



1. Open the battery compartment cover.
2. Remove the right battery (bolt to the left).
3. Press the white button on the board and hold it until you hear tick sounds.
4. Now hold the master card in front of the rotating knob within the next 5 seconds of the ticking.
Two ascending tones will confirm successful authorisation of the master card. Recognition of the card can take up to two seconds.
5. You can now re-insert the battery and close the battery cover.

Note:
Up to three master cards may be programmed.

Pairing transponders in private mode



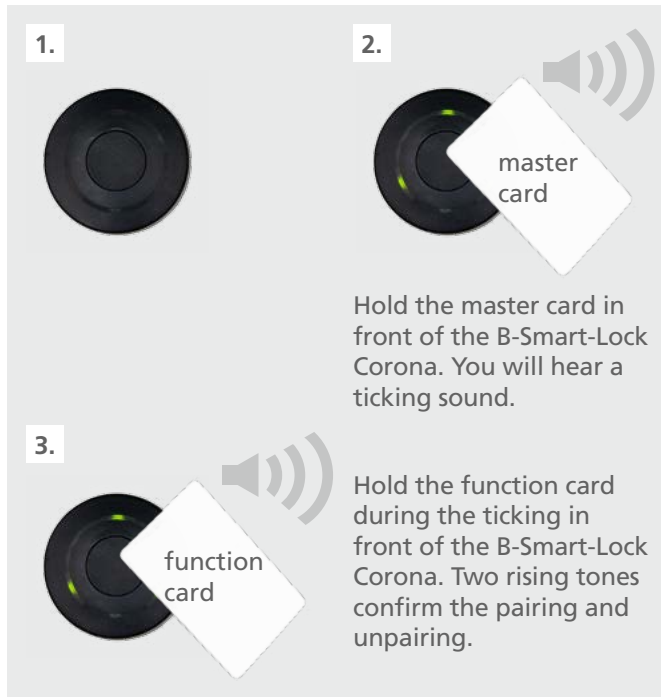
1. Put the lock into its open state, so that the knob can be rotated.
2. Hold the master card in front of the rotary knob. You will now hear a ticking sound.
3. Hold the transponder that you want to pair in front of the rotating knob during the ticking. Two ascending tones confirm the successful pairing of the function.

Note:
After each transponder that is held up, the ticking increases by 5 sec., so that additional transponders can be paired.

Unpairing transponders in private mode

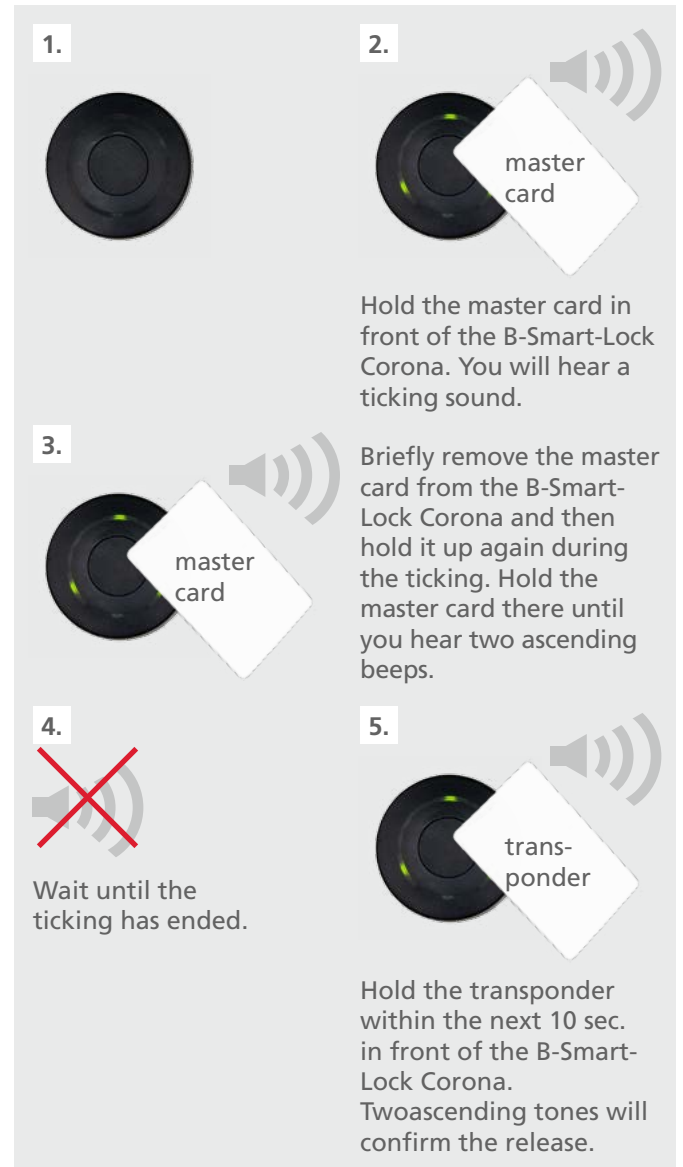
In order to unpair transponders, proceed exactly as you would when pairing a transponder. It is important that you have the transponder that you would like to unpair also at hand. If this is not the case, you can just unpair all transponders that have been paired with the lock at once using the *reset 2 function card*.

Activating/deactivating functions



- 1.** Put the lock into its open state, so that the knob can be rotated.
- 2.** Hold the master card in front of the rotary knob. You will now hear a ticking sound.
- 3.** Now hold the function card whose function you want to activate or deactivate up to the rotating knob during the ticking. Two ascending tones confirm the successful pairing or unpairing of the function.

Release of a paired transponder



- 1.** Put the lock into its open state, so that the knob can be rotated.
- 2.** Hold the master card in front of the rotary knob. You will now hear a ticking sound.
- 3.** Briefly take the master card away and then hold it in front of the lock again while you can still hear the ticking noise. Hold the card in front of the rotating knob until you hear two ascending beeps that briefly interrupt the ticking sound.
- 4.** Wait until the ticking has ended.
- 5.** Now hold the transponder whose pairing you want to delete again in front of the same surface for the next 10 sec. Once again two ascending tones confirm the successful release of the transponder.

Functional specifications

Multi User mode with pairing identifier

A transponder does not need to be paired with the lock. It can directly close a lock when held in front of one in the open state. Only the transponder that locks the lock can open it again. Also known as Hotel mode.

A transponder that has already closed a lock is unable to lock any additional locks.

This feature is only available with read/write transponders.

Multi User mode

Essentially identical to the multi-user mode with pairing identifier. The only difference is that a transponder that has already locked a lock can also lock other locks.

Private mode

Up to 50 transponders can be paired with one lock. Only these paired transponders can open and close a lock. Each paired transponder can open a lock, even if it hasn't closed it. Of course it is also possible for only one single transponder to be paired. Then only this one is authorised to close and open.

Locking modes

If a lock in *private mode* is opened, the lock will lock automatically after a certain amount of time according to the locking mode set.

Locking mode 1	3 seconds
Locking mode 2	6 seconds
Locking mode 3	18 seconds

Event mode

Event mode is a variant of the aforementioned locking modes. In this case the transponder has to be held in front of the lock again, because it won't lock automatically again after a certain amount of time such as in locking mode. This way the scenario in which a user leaves his or her transponder in the closet and then could no longer open it can be avoided. Event mode is the only possible variant in Multi User mode.

Beeps ON/OFF

The beeps when an unauthorised transponder is held up and the confirmation beeps for authorised opening and closing can be optionally turned on and off.

Status display ON/OFF

Flashing red, which shows closed status, can also be optionally turned on and off.

Reset

Reset 1

This function returns all functions back to the factory settings.

Reset 2

This function erases all paired transponders.

Warning: The master card is also deleted at the same time. The batteries must first be removed before these can be paired.

Batteries

Battery type	CR123A
Voltage	3 V
Capacity	1600 mAh

How are the batteries changed?

1. Open the battery compartment cover.
2. Remove the batteries and dispose of them at a designated collection point.
3. Insert the new batteries. Pay attention to the positive and negative poles. These can be found in the black plastic of the battery holder.

How often should the batteries be changed?

The battery life is approximately 30,000 closing cycles. With a daily use frequency of 20 operations, the battery will last about 2 years. We recommend that the batteries of all installed locks be changed at the same time. In a cycle of just under two years.

Disposing of the B-Smart-Lock Corona



Electronic devices may not be disposed of with household waste! Bring the device after the end use to a designated collection point.

BURG F.W. Lüling KG

Hegestraße 6
D-58300 Wetter (Germany)
Fon +49 (0) 23 35/63 08-0
Fax +49 (0) 23 35/63 08-999
info@burg.de
www.burg.de